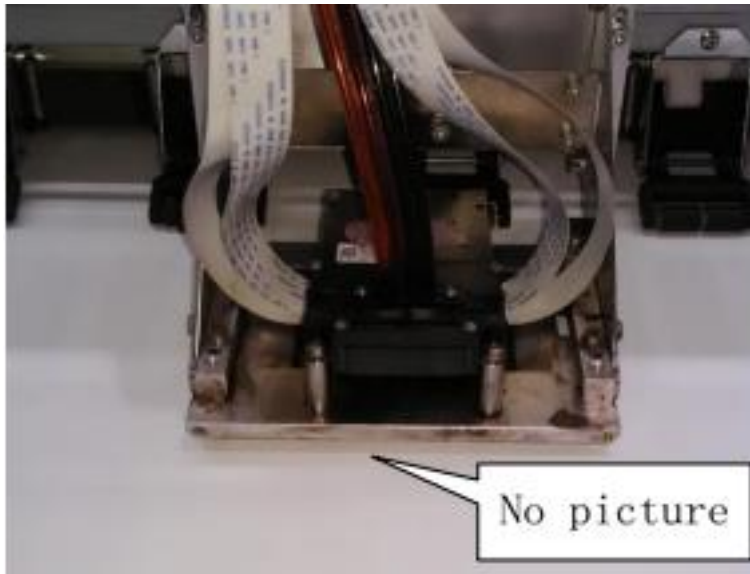


1. These problem would emerge possibly if the carriage motor parameter has been set wrong

A: It doesn't flash when the machine comes back to the zero point

B: No picture during the printing



C: Disordered picture



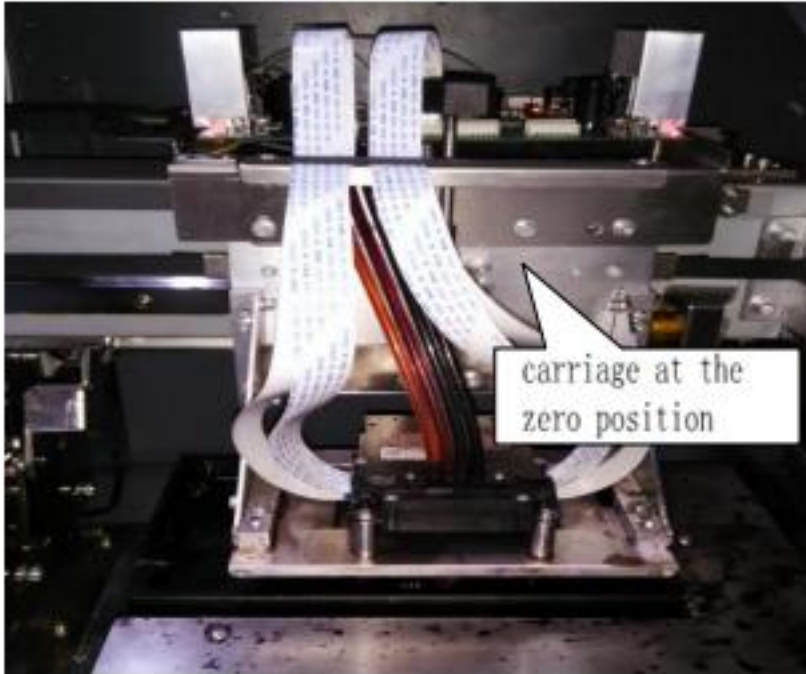
2. Procedure of how to debug the carriage motor parameter manually.

A. Close the control software

B. Turn off the power

C. Turn on the power

D. Reset the machine, and confirm the carriage is at the zero position



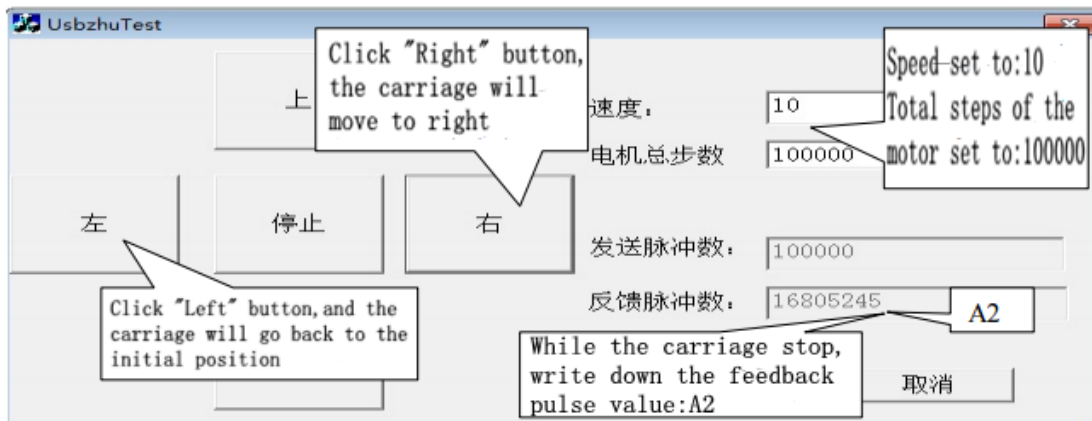
E. press "confirm" button on the machine keyboard - enter menu-select "Advanced", select "capping goes down", confirm the capping stopped at the bottom



of the stack.

F. Run the tools for debugging the carriage parameter. The tools located in the control software folder, is called MotorTest.exe.





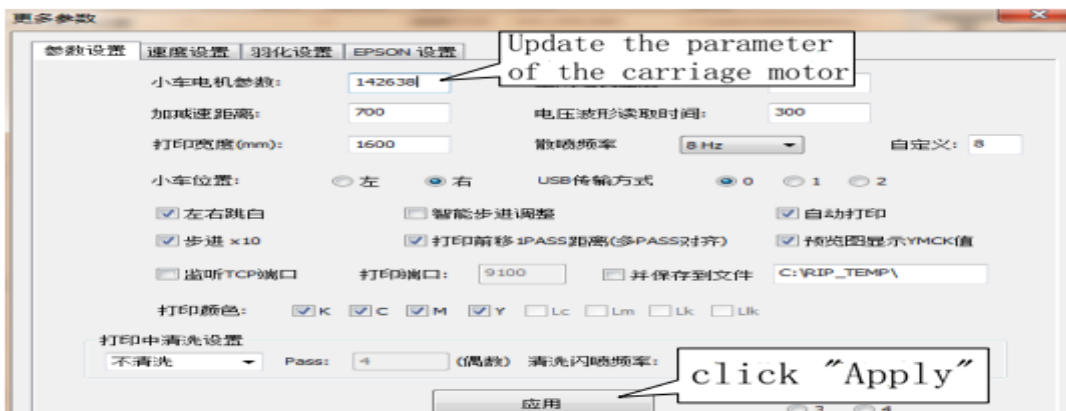
carriage motor parameter caculated formula listed below:

$$40000 * \text{steps of the motor} / (A2 - A1) = 40000 * 100000 / (16805245 - 16777202) = 142638$$

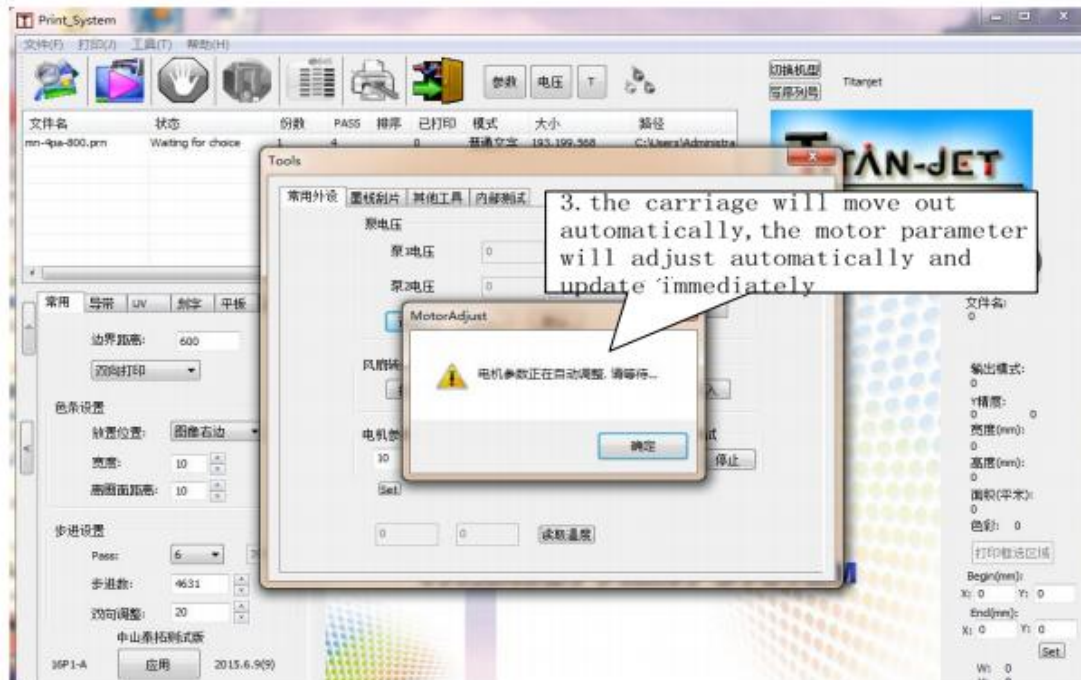
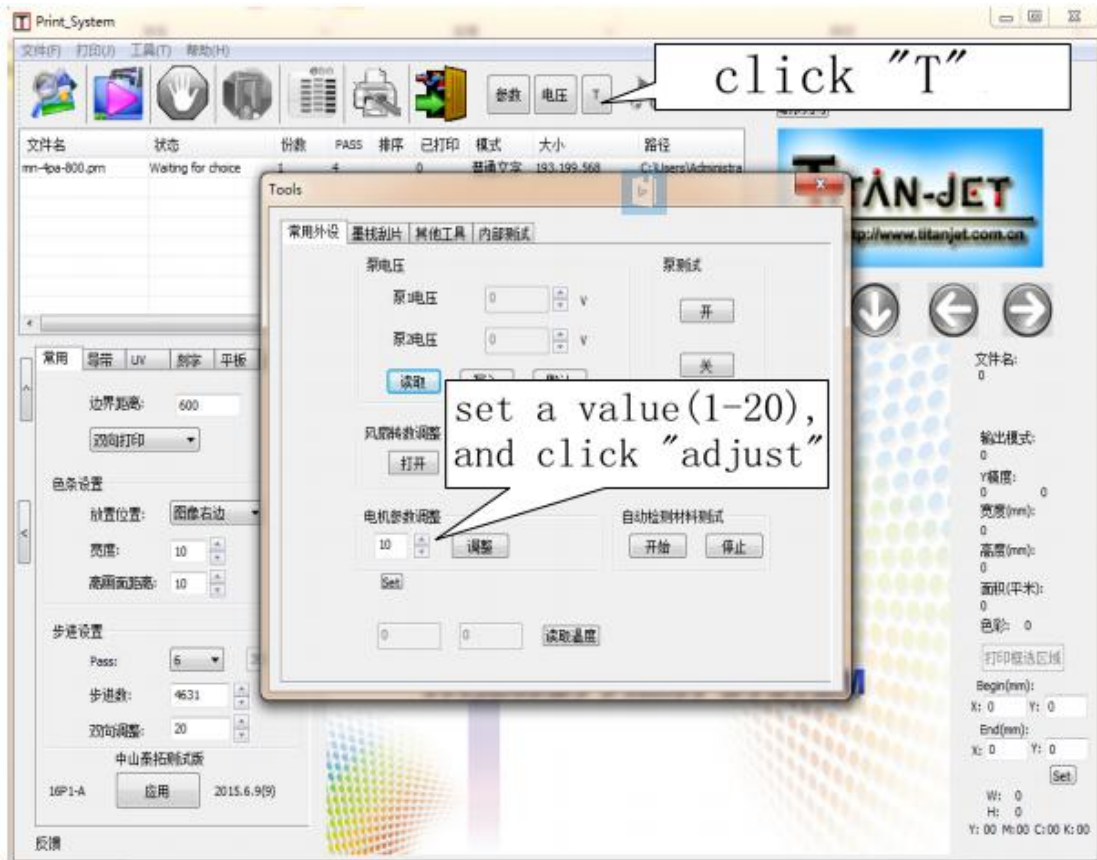
Then the patameter of the carriage motor:142638

(PS: You can repeat the precedur listed above to get the optimum parameter of the motor.)

G. Update the parameter of the carriage motor in the control software, as picture below, and click “Apply”.



3. Debug the carriage motor parameter manually



4. Motor test tools can be used to determine the gratings and grating the installation or Assembly of the decoder error.

(For example: if you find that car motor parameter value is a negative number, it is likely to be grating A,B decoder wrongly connected, different Machine have different connection)